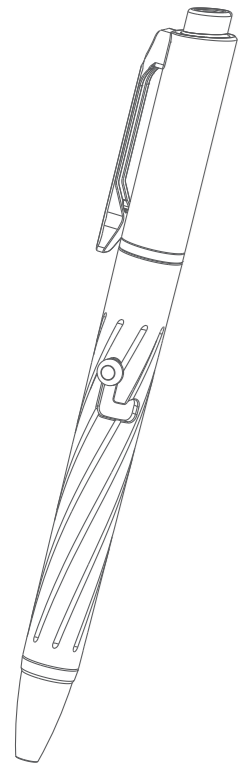


OOLIGHT

USER MANUAL



Осветительное устройство (Pro) Dark Space Silver (LIMITED EDITION)

Thank you for purchasing this Olight Product. Please read this manual carefully before use and keep it for future reference!

NOTICE

- When the battery level is less than 5%, the maximum output is limited to 5 lumens.
- The product adopts PWM dimming, which may cause noise when placed close to the radio.
- The clip is suitable for clamping on objects not more than 3mm thick.
- When replacing the refill, be careful not to deform the spring, as this may affect the use of the refill.
- Writing on soft or padded surfaces may result in thicker lines.
- Please keep the top lens of the pen cap clean, otherwise it may affect the use of the green beam.

EXCLUSION CLAUSE

Olight is not liable for damages or injuries sustained resulting from the usage of the product inconsistent with the warnings in the manual, including but not limited to using the product inconsistent with the recommended lockout mode.

WARRANTY

Within 30 days of purchase: Contact the original seller for repair or replacement.

Within 2 years of purchase: Contact Olight for repair or replacement.

The other no warranty fragile or low-value fittings like refill and USB cable, you can contact post-sale in 30 days after purchase if it has quality drawback or damage under normal use condition. Over 30 days or damage under abnormal use condition, the conditional quality assurance will be provided as appropriate.

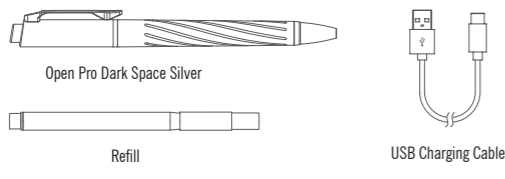
The other no warranty fragile or low-value fittings like refill and USB cable, you can contact post-sale in 30 days after purchase if it has quality drawback or damage under normal use condition. Over 30 days or damage under abnormal use condition, the conditional quality assurance will be provided as appropriate.

The other no warranty fragile or low-value fittings like refill and USB cable, you can contact post-sale in 30 days after purchase if it has quality drawback or damage under normal use condition. Over 30 days or damage under abnormal use condition, the conditional quality assurance will be provided as appropriate.

The other no warranty fragile or low-value fittings like refill and USB cable, you can contact post-sale in 30 days after purchase if it has quality drawback or damage under normal use condition. Over 30 days or damage under abnormal use condition, the conditional quality assurance will be provided as appropriate.

The other no warranty fragile or low-value fittings like refill and USB cable, you can contact post-sale in 30 days after purchase if it has quality drawback or damage under normal use condition. Over 30 days or damage under abnormal use condition, the conditional quality assurance will be provided as appropriate.

IN THE BOX



SPECIFICATIONS

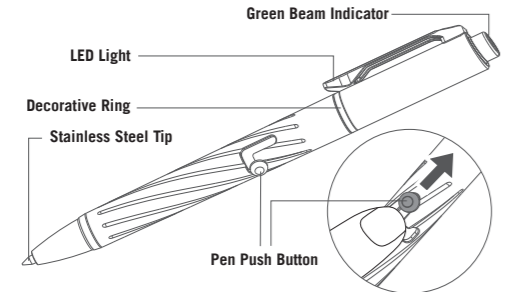
HIGH	120lumens	100%	23min	100%
MEDIUM	60lumens	100%	40min	17%
LOW	20lumens	100%	2h	
MOON	5lumens	100%	8h	

14m	49cd	(L)153*(D)12.7mm (L)6.02*(D)0.5in	48.2g/1.7oz
LASER 1	Max Output: 0.39mW (Class 1) Max Runtime: 4h30min Laser Wavelength: 508-530nm		

All above specifications are test results based on ANSI/NEMA FL1-2009 Standard.

PRODUCT OVERVIEW

The product is separable, the lower part is a pen, the upper part is a flashlight and a central ring used as a separation point.



CONTENTS

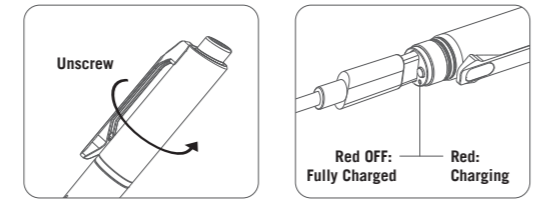
(EN) English	01
(CN) 简体中文	01
(FI) Finnish	02
(NO) Norwegian	02
(SV) Swedish	03
(NL) Nederlands	04
(PL) Polska	04
(DE) Deutsch	05
(HU) Magyarország	06
(RU) Русский	06
(ES) Español	07
(RO) Romanesc	08
(UA) Ukrainian	08
(JP) 日本語	09
(KR) 한국어	10
(TH) ไทย	11
(FR) Français	11
(IT) Italia	12
(SK) Slovenský jazyk	13

NOTE:

- Slide up the button (in the direction of the arrow) to operate the LED light (please refer to the operating instructions for specific operation).
- The pen tip is protected by wax. Please remove the protective wax before writing.

CHARGING

Before first use, please fully charge the product. Unscrew the pen from the middle and store the lower part (pen). Connect the upper part to the USB power supply or computer USB port via the provided charging cable (USB power supply not included. Users can use any USB power supply of digital devices or household appliances). The indicator lights up red to indicate charging, and the red will go out when it is fully charged.

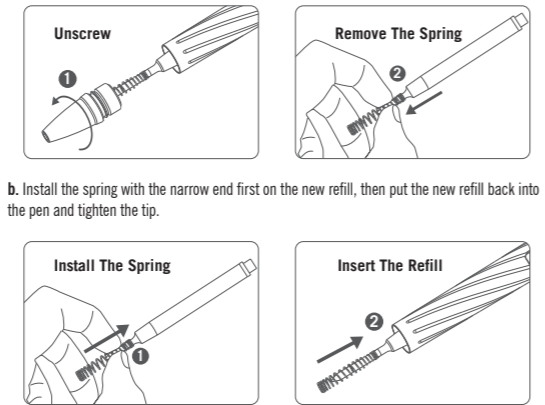


NOTE:

- Plug in the USB cable again when it is full charged, the charging indicator will still be Red for about 60 seconds.
- The product uses a USB-C charging interface with 4.2V 200mA constant current and voltage for charging. It can be fully charged in 55 minutes.

REFILL REPLACEMENT

- Unscrew the tip, take out the refill and remove the spring from the refill.
- Note: Please remove the spring from the refill carefully and DO NOT stretch it.



NOTE:

- DO NOT shine the light directly into human eyes. This may cause temporary blindness or permanent damage to the eyes.
- DO NOT cover the flashlight with objects, the heat generated by flashlight may cause burning or even cause unexpected disasters.
- Keep out of reach of children. DO NOT allow children to play to prevent physical harm.
- Built-in lithium battery, please DO NOT drop or hit heavy objects.

WARNING

- If you have used it in a watery environment, please keep the product clean and dry before charging.
- Beware of dropping:** The refill inside is a precision assembly product, and the ball on the tip may lose its writing function if damaged.
- DO NOT soak in water:** The refill of the product uses gel ink. The ink will become diluted or unable to write after dissolved in water.

NOTE:

- DO NOT use the product in a watery environment, please keep the product clean and dry before charging.
- Beware of dropping:** The refill inside is a precision assembly product, and the ball on the tip may lose its writing function if damaged.
- DO NOT soak in water:** The refill of the product uses gel ink. The ink will become diluted or unable to write after dissolved in water.

NOTE:

- DO NOT use the product in a watery environment, please keep the product clean and dry before charging.
- Beware of dropping:** The refill inside is a precision assembly product, and the ball on the tip may lose its writing function if damaged.
- DO NOT soak in water:** The refill of the product uses gel ink. The ink will become diluted or unable to write after dissolved in water.

NOTE:

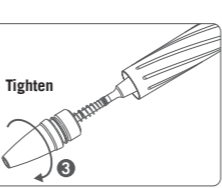
- DO NOT use the product in a watery environment, please keep the product clean and dry before charging.
- Beware of dropping:** The refill inside is a precision assembly product, and the ball on the tip may lose its writing function if damaged.
- DO NOT soak in water:** The refill of the product uses gel ink. The ink will become diluted or unable to write after dissolved in water.

NOTE:

- DO NOT use the product in a watery environment, please keep the product clean and dry before charging.
- Beware of dropping:** The refill inside is a precision assembly product, and the ball on the tip may lose its writing function if damaged.
- DO NOT soak in water:** The refill of the product uses gel ink. The ink will become diluted or unable to write after dissolved in water.

NOTE:

The other no warranty fragile or low-value fittings like refill and USB cable, you can contact post-sale in 30 days after purchase if it has quality drawback or damage under normal use condition. Over 30 days or damage under abnormal use condition, the conditional quality assurance will be provided as appropriate.



DANGER

- DO NOT shine the light directly into human eyes. This may cause temporary blindness or permanent damage to the eyes.
- DO NOT cover the flashlight with objects, the heat generated by flashlight may cause burning or even cause unexpected disasters.
- Keep out of reach of children. DO NOT allow children to play to prevent physical harm.
- Built-in lithium battery, please DO NOT drop or hit heavy objects.

WARNING

- If you have used it in a watery environment, please keep the product clean and dry before charging.
- Beware of dropping:** The refill inside is a precision assembly product, and the ball on the tip may lose its writing function if damaged.
- DO NOT soak in water:** The refill of the product uses gel ink. The ink will become diluted or unable to write after dissolved in water.

WARNING

- If you have used it in a watery environment, please keep the product clean and dry before charging.
- Beware of dropping:** The refill inside is a precision assembly product, and the ball on the tip may lose its writing function if damaged.
- DO NOT soak in water:** The refill of the product uses gel ink. The ink will become diluted or unable to write after dissolved in water.

WARNING

- If you have used it in a watery environment, please keep the product clean and dry before charging.
- Beware of dropping:** The refill inside is a precision assembly product, and the ball on the tip may lose its writing function if damaged.
- DO NOT soak in water:** The refill of the product uses gel ink. The ink will become diluted or unable to write after dissolved in water.

WARNING

- If you have used it in a watery environment, please keep the product clean and dry before charging.
- Beware of dropping:** The refill inside is a precision assembly product, and the ball on the tip may lose its writing function if damaged.
- DO NOT soak in water:** The refill of the product uses gel ink. The ink will become diluted or unable to write after dissolved in water.

WARNING

- If you have used it in a watery environment, please keep the product clean and dry before charging.
- Beware of dropping:** The refill inside is a precision assembly product, and the ball on the tip may lose its writing function if damaged.
- DO NOT soak in water:** The refill of the product uses gel ink. The ink will become diluted or unable to write after dissolved in water.

WARNING

- If you have used it in a watery environment, please keep the product clean and dry before charging.
- Beware of dropping:** The refill inside is a precision assembly product, and the ball on the tip may lose its writing function if damaged.
- DO NOT soak in water:** The refill of the product uses gel ink. The ink will become diluted or unable to write after dissolved in water.

WARNING

The other no warranty fragile or low-value fittings like refill and USB cable, you can contact post-sale in 30 days after purchase if it has quality drawback or damage under normal use condition. Over 30 days or damage under abnormal use condition, the conditional quality assurance will be provided as appropriate.

tryb niski → średni → wysoki → niski.
TRYB WYSOKI ŚWIATŁA BIAŁEGO: Kiedy światło jest wyłączone, szybko przesuń przełącznik dwukrotnie, aby od razu przejść do trybu wysokiego białego światła, ponownie przesuń przełącznik dwukrotnie, aby wrócić do trybu moonlight. Kiedy światło jest włączone, szybko przesuń przełącznik dwukrotnie, aby przejść do trybu wysokiego, ponownie przesuń dwukrotnie, żeby przywrócić zapamiętany tryb (przesuń dwukrotnie, aby przywrócić średni tryb w trybie wysokim).
ZIELONY LASER: Kiedy światło jest wyłączone, przesuń i przytrzymaj przełącznik, aby włączyć zielony laser. Przesuń przełącznik, aby go wyłączyć.

(DE) Deutsch

BEDIENUNG

Als Kugelschreiber: Schiebe den Bolzen entlang der L-förmigen Vertiefung bis die Schreibe Spitze einrastet, um zu schreiben. Bewege den Bolzen aus der arretierten Position nach oben, um die Schreibe Spitze zurück in den Kugelschreiber zu bewegen.
Als Taschenlampe: AN/AUS: Schalter nach oben schieben, um das Licht einzuschalten (Standard sind 5 Lumen) und nach unten schieben zum Ausschalten.

HELLIGKEIT EINSTELLEN: Im eingeschalteten Zustand den Schalter mehrfach nach oben schieben, um zwischen den Modi niedrig → mittel → hoch → niedrig zu wählen.
HOHER MODUS: Im ausgeschalteten Zustand den Schalter 2x in schneller Folge nach oben schieben, um die Lampe direkt im hohen Modus einzuschalten. Erneutes zweimaliges hoch schieben aktiviert den Moonlight Modus. Im eingeschalteten Zustand wird auf diese Weise ebenfalls der hohe Modus aktiviert und bei erneutem zweimaliges Hochschieben wird der zuletzt gewählte Modus aktiviert.

GRÜNER LASER: Im ausgeschalteten Modus den Schalter hochschieben und gedrückt halten, um den grünen Laser zu aktivieren. Zum Ausschalten den Schalter einmalig hochschieben.

(RU) Русский

Использовать как ручку: Аккуратно переведите головку штока ручки вниз до фиксирующего паза, после вы можете начать писать. Отпустите кнопку пера на вершине L-образной дорожки, наконецник отскочит обратно в ручку.
Использовать как фонарь: Вкл/выкл : переместите кнопку

The other no warranty fragile or low-value fittings like refill and USB cable, you can contact post-sale in 30 days after purchase if it has quality drawback or damage under normal use condition. Over 30 days or damage under abnormal use condition, the conditional quality assurance will be provided as appropriate.

The other no warranty fragile or low-value fittings like refill and USB cable, you can contact post-sale in 30 days after purchase if it has quality drawback or damage under normal use condition. Over 30 days or damage under abnormal use condition, the conditional quality assurance will be provided as appropriate.

The other no warranty fragile or low-value fittings like refill and USB cable, you can contact post-sale in 30 days after purchase if it has quality drawback or damage under normal use condition. Over 30 days or damage under abnormal use condition, the conditional quality assurance will be provided as appropriate.

(TH) ไทย

การใช้งาน:
 วิธีการใช้งานปากกา
 วิธีการใช้งานไฟฉาย

วิธีการใช้งานปากกา
 วิธีการใช้งานไฟฉาย

วิธีการใช้งานปากกา
 วิธีการใช้งานไฟฉาย

(IT) Italia

COME OPERARE
 Usata come una penna:
 Usata come una torcia:

(FR) Français

MODE D'EMPLOI
 Utilisée comme stylo :
 Faites descendre le bouton-poussoir le long du stylo jusqu'au bas de la fente en forme de L, la pointe apparaîtra et sera verrouillée, vous pourrez alors commencer à écrire. Relâchez le bouton-poussoir du stylo en haut de la fente en forme de L, la pointe se rétractera dans le stylo.

Utilisée comme lampe de poche :
 Allumage / Extinction: Faites glisser le bouton-poussoir vers le haut pour

(HU) Magyarország

A HASZNÁLAT MÓDJA
 Használati utasítás:
BE/KI: A lámpa BE/KI kapcsolásához csúsztassa fel a gombot (az alapbeállítási szerinti fokozat 5 lumen).
A FÉNYÉRŐ MEGVÁLTOZTATÁSA: A bekapcsolt állapotban lévő lámpán csúsztassa fel a gombot az alacsony → közepes → magas → alacsony fényerőfokozat kapcsolásához.
FEHÉR FÉNYŰ MAGAS FOKOZATÚ ÜZEMMÓD: A kikapcsolt állapotban lévő lámpa a gomb kétszeri gyors felfelé csúsztatásakor közvetlenül fehér fényű magas fokozatra áll. A gomb kétszeri újabb felfelé csúsztatásakor a lámpa holdfény üzemmódba áll. A fehér fényű üzemmódban lévő lámpa a gomb kétszeri gyors felfelé csúsztatásakor a lámpa visszaáll az elemeltett fényerőfokozatra (magas fokozat esetén kétszeri felfelé csúsztatásakor a közepes fokozat tér vissza).
Zöld fény: A kikapcsolt állapotban lévő lámpa a felfelé csúsztatott gomb pozícióban tartásával zöld színű fényre kapcsolható. A gomb egyszeri felfelé csúsztatásával kikapcsolható.

(ES) Español

CÓMO OPERAR

Usar como bolígrafo: Deslice suavemente el botón del lápiz a lo largo de la pista que tiene forma de L, la punta aparecerá y se bloqueará, luego puede comenzar a escribir. Suelte el botón del bolígrafo situado en la parte superior de la pista en forma de L, la punta volverá dentro del bolígrafo.
Usar como linterna: ENCENDIDO / APAGADO: Deslice el botón hacia arriba para ENCENDER / APAGAR la linterna (la salida predeterminada es de 5 lúmenes).

CAMBIAR BRILLO: Cuando la luz esté encendida, deslice el botón hacia arriba para activar bajo → medio → alto → bajo.
LUZ BLANCA ALTA: Cuando la luz esté apagada, deslice rápidamente el botón hacia arriba dos veces para acceder directamente a la luz blanca alta, deslice hacia arriba dos veces nuevamente para regresar al modo de luz de noche. Cuando la

The other no warranty fragile or low-value fittings like refill and USB cable, you can contact post-sale in 30 days after purchase if it has quality drawback or damage under normal use condition. Over 30 days or damage under abnormal use condition, the conditional quality assurance will be provided as appropriate.

The other no warranty fragile or low-value fittings like refill and USB cable, you can contact post-sale in 30 days after purchase if it has quality drawback or damage under normal use condition. Over 30 days or damage under abnormal use condition, the conditional quality assurance will be provided as appropriate.

The other no warranty fragile or low-value fittings like refill and USB cable, you can contact post-sale in 30 days after purchase if it has quality drawback or damage under normal use condition. Over 30 days or damage under abnormal use condition, the conditional quality assurance will be provided as appropriate.

The other no warranty fragile or low-value fittings like refill and USB cable, you can contact post-sale in 30 days after purchase if it has quality drawback or damage under normal use condition. Over 30 days or damage under abnormal use condition, the conditional quality assurance will be provided as appropriate.

The other no warranty fragile or low-value fittings like refill and USB cable, you can contact post-sale in 30 days after purchase if it has quality drawback or damage under normal use condition. Over 30 days or damage under abnormal use condition, the conditional quality assurance will be provided as appropriate.

The other no warranty fragile or low-value fittings like refill and USB cable, you can contact post-sale in 30 days after purchase if it has quality drawback or damage under normal use condition. Over 30 days or damage under abnormal use condition, the conditional quality assurance will be provided as appropriate.

The other no warranty fragile or low-value fittings like refill and USB cable, you can contact post-sale in 30 days after purchase if it has quality drawback or damage under normal use condition. Over 30 days or damage under abnormal use condition, the conditional quality assurance will be provided as appropriate.

The other no warranty fragile or low-value fittings like refill and USB cable, you can contact post-sale in 30 days after purchase if it has quality drawback or damage under normal use condition. Over 30 days or damage under abnormal use condition, the conditional quality assurance will be provided as appropriate.

The other no warranty fragile or low-value fittings like refill and USB cable, you can contact post-sale in 30 days after purchase if it has quality drawback or damage under normal use condition. Over 30 days or damage under abnormal use condition, the conditional quality assurance will be provided as appropriate.

The other no warranty fragile or low-value fittings like refill and USB cable, you can contact post-sale in 30 days after purchase if it has quality drawback or damage under normal use condition. Over 30 days or damage under abnormal use condition, the conditional quality assurance will be provided as appropriate.

The other no warranty fragile or low-value fittings like refill and USB cable, you can contact post-sale in 30 days after purchase if it has quality drawback or damage under normal use condition. Over 30 days or damage under abnormal use condition, the conditional quality assurance will be provided as appropriate.

The other no warranty fragile or low-value fittings like refill and USB cable, you can contact post-sale in 30 days after purchase if it has quality drawback or damage under normal use condition. Over 30 days or damage under abnormal use condition, the conditional quality assurance will be provided as appropriate.

The other no warranty fragile or low-value fittings like refill and USB cable, you can contact post-sale in 30 days after purchase if it has quality drawback or damage under normal use condition. Over 30 days or damage under abnormal use condition, the conditional quality assurance will be provided as appropriate.

The other no warranty fragile or low-value fittings like refill and USB cable, you can contact post-sale in 30 days after purchase if it has quality drawback or damage under normal use condition. Over 30 days or damage under abnormal use condition, the conditional quality assurance will be provided as appropriate.

The other no warranty fragile or low-value fittings like refill and USB cable, you can contact post-sale in 30 days after purchase if it has quality drawback or damage under normal use condition. Over 30 days or damage under abnormal use condition, the conditional quality assurance will be provided as appropriate.

The other no warranty fragile or low-value fittings like refill and USB cable, you can contact post-sale in 30 days after purchase if it has quality drawback or damage under normal use condition. Over 30 days or damage under abnormal use condition, the conditional quality assurance will be provided as appropriate.

The other no warranty fragile or low-value fittings like refill and USB cable, you can contact post-sale in 30 days after purchase if it has quality drawback or damage under normal use condition. Over 30 days or damage under abnormal use condition, the conditional quality assurance will be provided as appropriate.

The other no warranty fragile or low-value fittings like refill and USB cable, you can contact post-sale in 30 days after purchase if it has quality drawback or damage under normal use condition. Over 30 days or damage under abnormal use condition, the conditional quality assurance will be provided as appropriate.

The other no warranty fragile or low-value fittings like refill and USB cable, you can contact post-sale in 30 days after purchase if it has quality drawback or damage under normal use condition. Over 30 days or damage under abnormal use condition, the conditional quality assurance will be provided as appropriate.

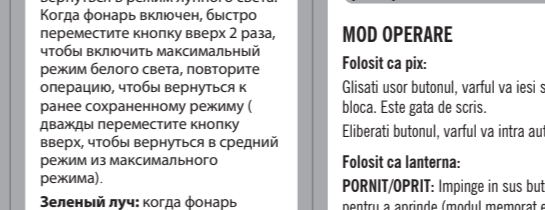
The other no warranty fragile or low-value fittings like refill and USB cable, you can contact post-sale in 30 days after purchase if it has quality drawback or damage under normal use condition. Over 30 days or damage under abnormal use condition, the conditional quality assurance will be provided as appropriate.

The other no warranty fragile or low-value fittings like refill and USB cable, you can contact post-sale in 30 days after purchase if it has quality drawback or damage under normal use condition. Over 30 days or damage under abnormal use condition, the conditional quality assurance will be provided as appropriate.

NOTE:

- Slide up the button (in the direction of the arrow) to operate the LED light (please refer to the operating instructions for specific operation).
- The pen tip is protected by wax. Please remove the protective wax before writing.

Before first use, please fully charge the product. Unscrew the pen from the middle and store the lower part (pen). Connect the upper part to the USB power supply or computer USB port via the provided charging cable (USB power supply not included. Users can use any USB power supply of digital devices or household appliances). The indicator lights up red to indicate charging, and the red will go out when it is fully charged.

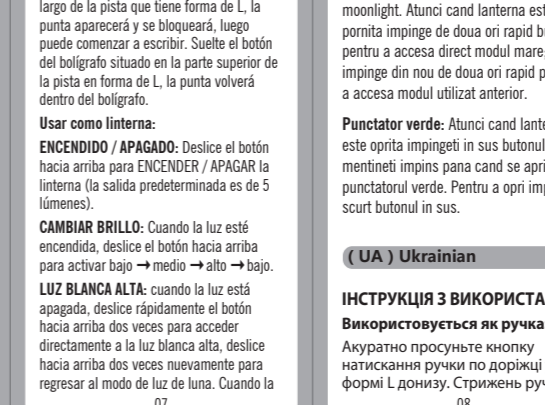


NOTE:

- Plug in the USB cable again when it is full charged, the charging indicator will still be Red for about 60 seconds.
- The product uses a USB-C charging interface with 4.2V 200mA constant current and voltage for charging. It can be fully charged in 55 minutes.

REFILL REPLACEMENT

- Unscrew the tip, take out the refill and remove the spring from the refill.
- Note: Please remove the spring from the refill carefully and DO NOT stretch it.



NOTE:

- DO NOT shine the light directly into human eyes. This may cause temporary blindness or permanent damage to the eyes.
- DO NOT cover the flashlight with objects, the heat generated by flashlight may cause burning or even cause unexpected disasters.
- Keep out of reach of children. DO NOT allow children to play to prevent physical harm.
- Built-in lithium battery, please DO NOT drop or hit heavy objects.

WARNING

- If you have used it in a watery environment, please keep the product clean and dry before charging.
- Beware of dropping:** The refill inside is a precision assembly product, and the ball on the tip may lose its writing function if damaged.
- DO NOT soak in water:** The refill of the product uses gel ink. The ink will become diluted or unable to write after dissolved in water.

NOTE:

- DO NOT use the product in a watery environment, please keep the product clean and dry before charging.
- Beware of dropping:** The refill inside is a precision assembly product, and the ball on the tip may lose its writing function if damaged.
- DO NOT soak in water:** The refill of the product uses gel ink. The ink will become diluted or unable to write after dissolved in water.

NOTE:

- DO NOT use the product in a watery environment, please keep the product clean and dry before charging.
- Beware of dropping:** The refill inside is a precision assembly product, and the ball on the tip may lose its writing function if damaged.
- DO NOT soak in water:** The refill of the product uses gel ink. The ink will become diluted or unable to write after dissolved in water.

NOTE:

- DO NOT use the product in a watery environment, please keep the product clean and dry before charging.
- Beware of dropping:** The refill inside is a precision assembly product, and the ball on the tip may lose its writing function if damaged.
- DO NOT soak in water:** The refill of the product uses gel ink. The ink will become diluted or unable to write after dissolved in water.